



Australian Native

PRODUCT FACT SHEET

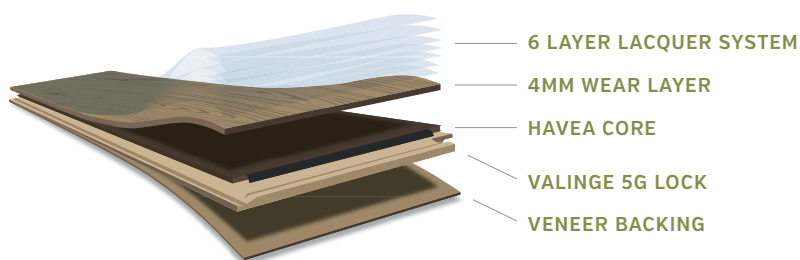
Introduction

Emphasising two of Australia's much loved classic species, Blackbutt and Spotted Gum. Australian Native provides that organic, natural, warm feeling. The pre-finished range features a square edge profile and an ultra matt finish to achieve a floor that's earthy and effortless. Manufactured using a low shrinkage and ecofriendly Hevea as the core material and a tough Australian hardwood lamella for the wear layer, Australian Native is consistent in quality and structural stability.

Australian Native

Specifications

Species:	Blackbutt, Spotted Gum & Rustic Blackbutt
Core Material:	Hevea
Locking System:	Välinge 5G Glueless joining system
Size:	132mm x 13.5mm
Wear Layer:	4mm
Length:	1820mm & 2130mm
Surface:	Smooth texture
Coating:	UV cured 6 coat Klumpp system
Finish:	Ultra Matt 10% Gloss
Coverage:	1820mm - 1.922m ² and 2130mm - 2.249m ²
Packaging:	6 rows per box, maximum of 3 nested rows
Matching Accessories:	EVERwalk & HUSHwalk Underlays, Trims & Scotia

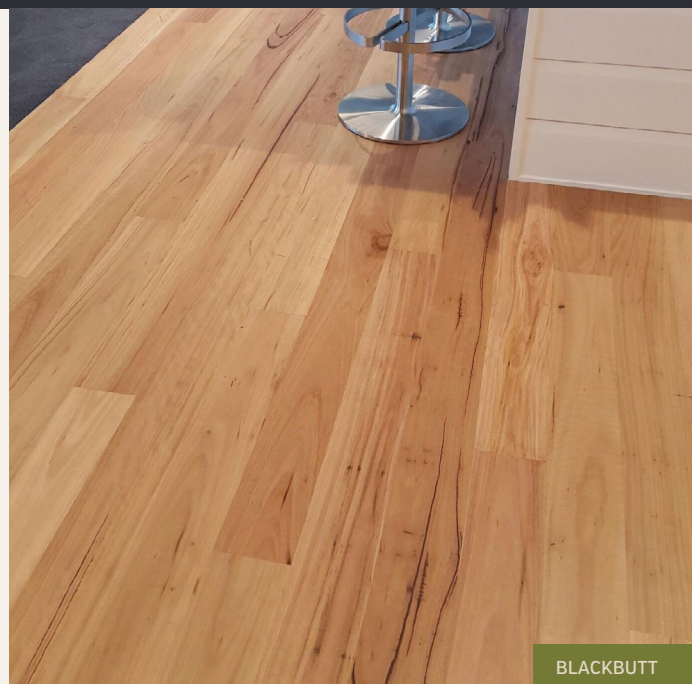


Stylish, Practical and Durable

Utilising the latest in environmentally friendly UV coatings, our 6 coat system delivers a floor finish similar to a stylish oiled floor but with the durability and protection a UV lacquer offers. Australian Native engineered flooring provides a practical yet stylish option suited for day-to-day use in most applications.

Australian Native construction incorporates a licensed Välinge click system, using a single action installation method which saves time and ensures you can enjoy your new floor instantly.

In addition to our Blackbutt and Spotted Gum, the Australian Native range offers Rustic Blackbutt, a full featured floor with prominent gum veins, gum pockets, trails, burls and borer holes.



BLACKBUTT



SPOTTED GUM



RUSTIC BLACKBUTT